

Spring 2022

Number4 (No 24)

INSIDE EDGE

The Kent Cricket Heritage Trust

A Message from the Chairman, Jo Rice



Inside this issue:

<i>Moment in Time</i>	2
<i>From the KCCC Collections</i>	3
<i>KCHT & Curator Matters</i>	3
<i>Lost Grounds in Maidstone</i>	4
<i>KCHT Subscriptions</i>	5
<i>Inside Edge Distribution</i>	5
<i>Kent Wicket-keepers</i>	6
<i>Kent Players: a Bibliography</i>	8
<i>New Publication</i>	10

As we welcome a new season, there is a great deal of change in the air. Not only will the club have a board, rather than a committee, to run its affairs, but we will have newly refurbished Woolley and Cowdrey stands to enjoy from the outside and inside. And we should be hosting full houses once again, as all Covid restrictions on the size of gatherings have ended.

The changes which are taking place right across the game at all levels must not let us forget the importance of cricket's heritage. If we ignore our history, we are doomed to make the same mistakes again and again. The currently rudderless ECB is looking into the overall structure of English cricket, with a view to Making the Test Team Great Again or some such, but they are in danger of destroying the county structure which has always underpinned our game. Why, some argue, do we have 18 counties, when in Australia there are only half a dozen first-class State sides and they keep beating us? Well, that's because the population of UK is at least three times the population of Australia, so we have three times as many teams. There's plenty of administrators at the top of the game who do not understand the importance of the county game, nor the loyalties it inspires. It's up to us, as guardians of county cricket's heritage, to make sure that the county cricket baby is not thrown out with the Test failure bathwater.



Jonathan Rice

1066 and All That



A recent documentary (BBC4 23 March 2022) firmly claimed that Bayeux Tapestry first saw the light of day in Canterbury. Here is evidence recently retrieved from the cutting room floor that the embroiderers took time off to take in a match played by the Normans as the swept through the countryside after the affair at Hastings. There is a theory that the numbering system of cricket, based on eleven or multiples thereof, came from Northern France. So here are

our conquerors educating the conquered into their game. Or, are they?!

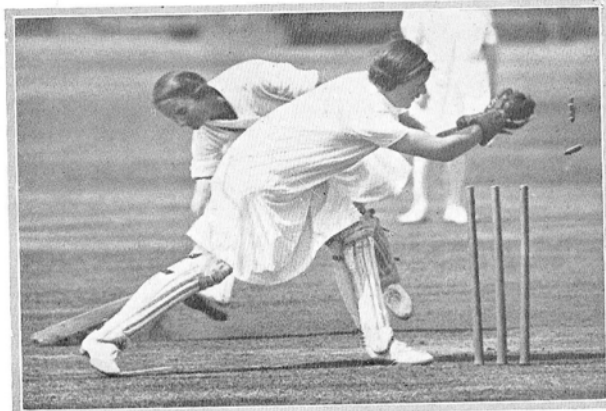
Embroidery by Judith Milton of the Mid-Kent Needlework and Embroidery Group, recently to be seen at an exhibition by the Group in Maidstone Museum.

A Moment in Time, Wednesday 17 July 1929

SKIRTED BOWLERS AND BATSMEN: LADIES' CRICKET AT BECKENHAM.



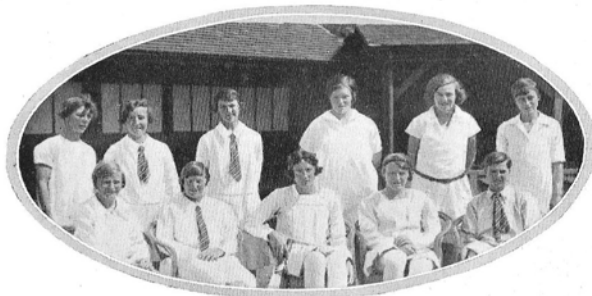
BOWLING FOR THE LONDON TEAM:
MRS. KING-TURNER.



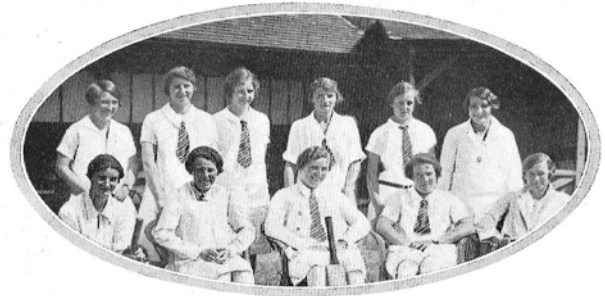
RUNNING OUT MISS C. M. READ, WHO HAD TO BE CONTENT WITH A
MODEST SCORE OF 2 FOR THE REST OF ENGLAND.



MISS VALENTINE, WHO DID THE
HAT TRICK FOR LONDON.



LONDON AND DISTRICT TEAM—(L. TO R.) STANDING: MISS VALENTINE,
MISS A. COTTELL, MISS B. HEWLETT, MISS M. CHILDS, MISS ANDERSON,
AND MISS RADCLIFFE. SITTING—MISS K. DOMAN, MISS PARTRIDGE, MISS V.
STRAKER (CAPTAIN), MISS M. POLLARD, AND MRS. KING-TURNER.



THE REST OF ENGLAND TEAM—(L. TO R.) STANDING: MISS LAIDMAN,
MISS C. EDGE, MISS M. BLAND, MISS C. M. READ, MISS K. TATHAM-WARTOR,
AND MISS E. A. SNOWBALL. SITTING—MISS H. DOUGLAS-BROWN, MRS. SCOTT-
BOWDEN, MISS B. ABBOT (CAPTAIN), MISS A. BULL, AND MISS M. HADDESLEY.

A part of a montage of photographs taken from *The Illustrated Sporting and Dramatic News* for July 27 1929. It formed part of a feature "Women in Sport".

It marked what is stated was the first representative women's cricket match. The Kent interest is that it took place on one of Kent's county cricket grounds, Foxgrove Road, Beckenham.

As far as can be identified it did not feature many names that have come down to us as important in Kent women's cricket, but records of such matches and their participants of this time are far from complete.

The accompanying text is of the period—"The form was not of Lord's or the Oval class, but this matters little if the players get the necessary thrill out of the pastime",

Several prominent hockey players of the period took part, "The ladies' fielding was sound and fearless, the throwing weak, the batting sound, if restricted and the bowling fair, if lacking in pace."

The teams were London and District and the Rest of England.. The performances of note were in the Rest's innings. They won the toss and were bowled out for 215. Amy Bull scored 73, but the one familiar name of Kent interest, Carol Mary Valentine, took 6-62, including the hat-trick. Miss Valentine, who later played a test match for England, was the older sister of Bryan Valentine, Kent and England. The London side replied and had 176 on the board with only one wicket to fall when the match was declared a draw.

From the Kent County Cricket Club Collections

The Tom Morris Collection

The sports photographer and lifelong Kent cricket and Charlton Athletic fan Tom Morris sadly died last year at the age of 76. Based in Plumstead, Tom took photos of Charlton for 58 years and became the Club's official photographer. Every iconic photo of Charlton through the 1960s to the 1990s was taken by Tom, and he left behind over twenty thousand images.

His work for Kent cricket was less well-known, but he was Club photographer in the 1980s and early 1990s. Tom cannily retained copyright of his images, and was generous in granting use, but nonetheless the KCCC collections have been light on images of this era.

Tom's Estate donated his collections to the Charlton Athletic Museum, and through our relationship with them, they in turn have passed the cricket photos to the KCCC Collections. They are only a small fraction of the total, which also included photos of sports such as racing, rugby and ice hockey, but the several hundred images fill an important gap in our collections.

Arriving in digital, slide and print formats, the collection reflects both the challenges and potential of photographic collections. Alongside the many official team and head shots, there are playing images, and even a collection of a Goodwin Sands game broadcast by Radio Kent. As we gradually digitise our photographs, we look forward to sharing more of them with members and supporters.

Photograph of Steve Marsh in action courtesy of the Tom Morris Estate.



Caroline Ellis

KCHT and Curator Matters

The Kent Cricket Heritage Trust is always in need of more help. With our Hon Curator stepping back a little from the role, we are now looking at how best to organise the care and promotion of the Kent CCC collections. For this reason we need to gather a group of people who will have a little spare time and energy to help out on future KCHT projects. We are not looking for any special skills beyond a willingness to help. If you are at all interested, or know somebody who is, please either speak to one of those names listed on page 10 or contact the KCHT chairman, Jo Rice, on 07714 701379 or jnhrice@googlemail.com. We are not asking for a huge commitment of time, just an occasional willing pair of hands, so please do think about putting your name forward, especially if you live within striking distance of Canterbury.

Many thanks.

Jo Rice

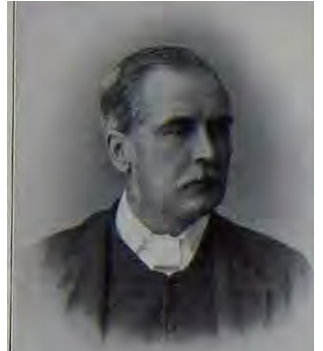
Lost Grounds in the Maidstone Area

Country Estates Part 2

Continued from Vol 6 no 3 (No 23)

Fatherwell Hall, just outside West Malling, was running its own team both before and after WWI on a pitch within the Estate grounds. Offham CC played their first match on this ground against the gardeners of the Hall in the summer of 1944, before moving to their present ground the following year.

The Rev Hon Edward Vesey Bligh (1829-1908), pictured, was a cricketer, diplomat and clergyman and lived at the Hall. He played 23 matches for Kent and was Curate at Snodland and Vicar of Birling.

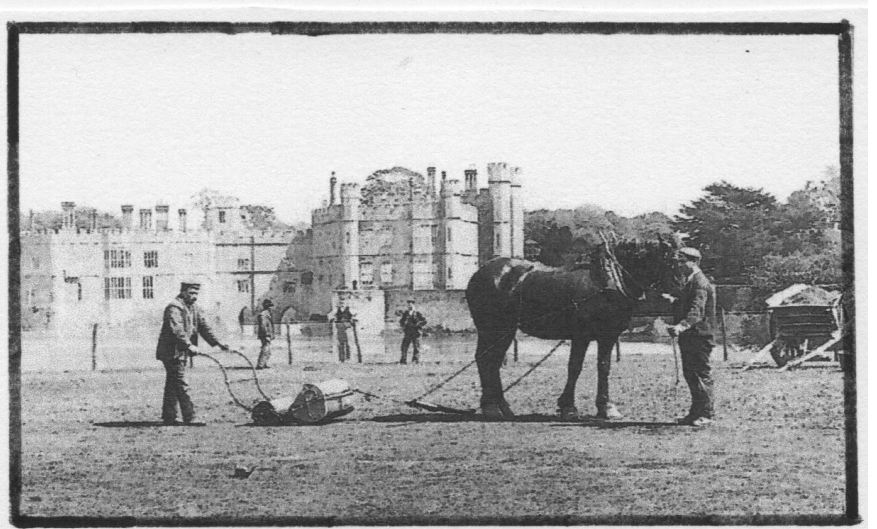


The owner of the Hall in the 1920s/30s was Bligh's son-in-law, Brigadier General Cyril Vernon Wingfield-Stratford who continued the sporting tradition. He played for the MCC, made one footballing appearance for England against Scotland in 1877 and was an FA Cup winner in 1875 with the Royal Engineers.

In 1119 Leeds Castle was reconstructed in stone, having previously been a wooden structure. On an island, it has been described as the **"loveliest castle in the world."**

The Estate comprises some 500 acres and is open to the public. It provides a host of activities, including a 9 hole golf course.

The Leeds Cricket Club (later changed to Leeds & Broomfield) was formed in 1762. A view of the original ground is shown in the photograph and was relocated to its present site on another part of the Estate around 1947.

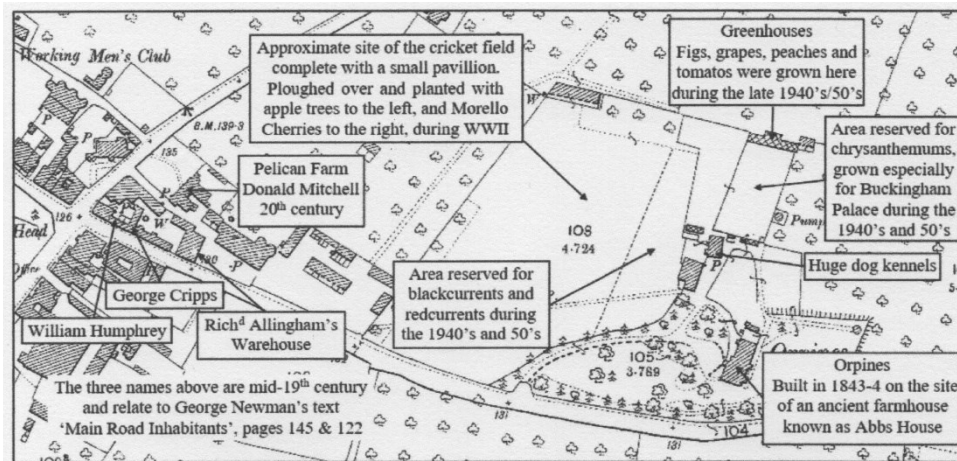


The present Watlingbury Cricket Club is the third club to bear the Watlingbury name since the first recorded match in 1848, with each playing on a different ground. Two years earlier there was a report of an annual match between workmen representing firms of both brickmakers and brewers played at the North Pole, a local public house of that name.

The first club ran from 1850 to 1897 and played its matches on a field belonging to Mr Richard Harris, the village butcher, at **the rear of Mr Jude's brewery. The chief cause of the club's demise was given as the difficulty in obtaining a suitable ground.**

Wateringbury Place is a three storey Queen Anne House built in 1707, with an original Estate of 200 acres and was associated with local cricket until the start of WW2, with members of the family playing for the first club. Matthias Lucas, a former Lord Mayor of London, purchased Wateringbury Place in the 1820's and built several substantial houses, one of which was the Orpines.

The second club ran from 1905 to 1939, located on part of the Orpines land, owned then by the owner of Wateringbury Place, Sir George Donaldson. The location is shown on the map which is featured in the book "Wateringbury- In the Steps of George Newman and Beyond" by Dail Whiting.



The Orpines was up for sale in 1919 and it was purchased by Lieut-Col Sir Kildare Dixon Borrowes 10th Baronet who played six first-class matches, as a batsman and wicket keeper, for Essex and Middlesex. He died there in 1924 at the age of 72.

World War II was to curtail cricket which would not return to the Orpines and it would be another 46 years before Wateringbury Cricket Club would again play cricket.

As a result of information being available about cricket in Wateringbury, a 20 page booklet has been produced, which is scheduled to appear on the Wateringbury History Society website.

Ian Lambert

KCHT Subscriptions

The 2022 subscriptions are now due. So unless you pay by direct debit, this is a gentle reminder to forward your minimum £10 to the Kent Cricket Heritage Trust, The Spitfire Ground, St Lawrence, Old Dover Road, Canterbury, CT1 3NZ

Inside Edge Distribution

KCHT is mindful that some paid up members may not be receiving copies of Inside Edge regularly or not all. If you are aware of anyone having these problems, please could let you anyone listed on page 10 know.

Back issues of *Inside Edge* can be forwarded to fill gaps. Please contact howardmilton@btinternet.com.

*Kent County Cricket Club Wicket-keepers
Since 1871
Part 1— 1871-1900*

Listed here in chronological order are all the players who have been chosen to play for the county in that position since the formation of the Kent County Cricket Club in 1871. (Players who have kept in emergency during the course of match are not included.)

1 Henty, Edward (1839-1900). Kent 1865-81 – **115 + 1 matches. Keeper: 113 + 1 matches (ct 133 st 63 + ct 1 st 2).** Kent's regular keeper during his period. One of first wicket-keepers to dispense with a long-stop. Unpopular with bowlers because of his reported liking for ju-jubes making the ball sticky. First-class umpire 1883-94. Sometime billiard-room proprietor at various pubs in South-East London.

2 Rawson, Herbert Edward (1852-1924). Kent 1873 – 1 match (ct 1 st 3). Royal Engineers wicket-keeper for 22 years. Soccer for England (1 cap); 2 F.A. Cup Finals for Royal Engineers 1874-75 (winner 1875). Later a colonel, commanding Royal Engineers in Natal during Boer War.

3 Bennet, Ferdinando Wallis (1850-1929). Kent 1874 – 1 match (ct 2). Not known as a wicket-keeper, more known as a prolific batsman in Royal Engineers cricket. Later a Colonel. Served in the campaign to relieve General Gordon in Khartoum and in the Boer War

4 Hickmott, Edward (1850-1934). Kent 1875-88 – 10 matches. Keeper: 7 matches (ct 15 st 3). Professional/groundsman at Mote Park, Maidstone for 40 years. Oversaw the re-alignment of the ground in 1908.

5 Tylecote, Edward Ferdinando Sutton (1849-1938). Kent 1875-83 – 21 + 1 matches (ct 31st 8 + st 3). Cap 1882. 6 tests for England 1882/83 – 1886 (ct 5 st 5). Oxford University 1869-72 (Blue all. Capt. 1871-72). First Kent wicket-keeper to play for England. Scored first fifty by wicket-keeper in test matches. Scored first hundred by a Kent wicket-keeper. Mathematics teacher at the Royal Military Academy Woolwich.

6 Palmer, Richard (1848-1939). Kent 1873-82 – 13 matches. Keeper: 1875-76 – 4 matches (ct 3 st 7). Hadlow player. Primarily a batsman and bowler. Staffordshire 1886. Sometime employed at Sevenoaks Vine.

7 Wood, Henry (1853-1919). Kent 1876-82 – **9 matches. Keeper: 5 matches (ct 8 st 6).** **One of Lord Harris's few admitted mistakes, suspicious of Wood's hands, and hopeful of Tylecote's services, he let Wood go to Surrey where played 1884-1900,** most of the period when Kent lacked a regular keeper. 4 tests for England 1888-1891/92 (ct 2 st 1). Scored first hundred by a wicket-keeper in tests. First-class umpire 1910-12.

8 Marsham, George (1849-1927). Kent 1876-77 – 3 matches (ct 2 st 2). Kent President 1886. Prominent figure in Kent cricket over many years. President The Mote 1876-1927. Chairman Kent County Council 1900-10.

9 Yardley, William (1849-1900). Kent 1868-78 – 34 matches. Keeper: 1877 – 1 match (ct 3). Cambridge University 1869-72 (Blue all years. Capt.1871). Occasional wicket-keeper. Far better known as a noted batsman of the period. Dramatist and dramatic critic.

10 Ingram, Isaac (1855-1947). Kent 1878-79 – **11 + 1 matches (ct 8 st 7) Known as "Ike". Kept regularly for one season (1878)** but his hands were considered not up to the task. A cricket-ball sticher from Leigh. Associated with Leigh Cricket Club for 50 years

11 Patterson, William Harry (1859-1946). Kent 1880-1900 – 152 matches (Joint-Capt. 1890-93). Cap 1882. Keeper: 1880-95 – 5 matches (ct 4). Oxford University 1878-81 (Blue 1880-81). Kept in 4 matches in 1880 and one in 1895 when Kent lacked a keeper. Kent President 1923. Chairman, Kent Managing Committee 1932-38. A solicitor.

12 Kemp, Manley Colchester (1861-1951). Kent 1880-95 – 86 + 2 matches. Cap 1882. Keeper: 74 + 1 matches (ct 98 st 58 + ct 1). Oxford University 1881-84 (Blue all years. Capt 1883-84). Regular keeper in August when free of his scholastic duties. **Long-time master at Harrow, where he was synonymous with the school and was known as "The Bishop". All-round sportsman – rackets, soccer and athletics.**

13 Boys, John James (1856-83). Kent 1875-81 – 3 matches. Keeper: 1881 – 2 matches (ct 2 st 2). A musician in the Royal Artillery, known as “Bandsman”. Died suddenly on his wedding day.

14 Pentecost, John Henry (1857-1902). Kent 1882-90 – 63 matches (ct 93 st 29). Cap 1885. Regular keeper for most of 1880s but always gave way to Kemp in August. Career ended by failing eyesight, but was later on the staff at Lord's. “No-one ever spoke a bad word of him except he was a poor wicket-keeper.”

15 Nuttall, Henry (1855-1945). Kent 1889-94 – 14 matches (ct 12 st 6). Played in a period when Kent were without a regular keeper. Lived most of his life in and around Crayford.

16 Atkins, Frederick Mark (1864-1941). Kent 1882-97 – 25 matches. Keeper: 1890-97 – 12 matches (ct 15 st 1). Played occasionally, keeping in his last 12 matches. Appearances largely at the Mote and early season. Better known as a prolific scorer in club cricket, in particular for The Mote.

17 Torrens, William Matt (1869-1931). Kent 1890 (4 matches) (ct 2). Amateur from Hayes (Kent). Banker/stockbroker,

18 Leaney, Edwin (1860-1904). Kent 1892 – 6 matches (ct 4 st 1). Old Charlton player. Toured South Africa 1891/92.

19 Malden, Eustace (1863-1947). Kent 1892-93 – 12 matches. Cap 1892. Keeper: 11 matches (ct 7 st 3). Later took Holy Orders with a living at Frant in Sussex.

20 Layman, Alfred Richard (1858-1940). Kent 1893 – 1 match (ct 1). Granville (Lee) Cricket Club amateur.

21 Hibbard, John Arthur (1863-1904). Kent 1893 – 4 matches (ct 8). An engineer in the Royal Navy. Much cricket in and around the Chatham area.

22 Little, Charles William (1870-1922). Kent 1893 – 5 matches (ct 4 st 2). Oxford University 1890. Master at Winchester 1904-22.

23 Hunter, Charles Herbert (1867-1955). Kent 1895 – 2 matches (ct 2 st 1). Bickley Park amateur. Cambridge University 1889. Kept in game at Gravesend when W.G. scored 257 and was on the pitch for the whole match. Law and family timber business.

24 Huish, Frederick Henry (1869-1957). Kent 1895-1914 – **469 matches (ct 901 st 352). Cap 1896. Kent's regular keeper** in their pre-1914 golden era. Played in record number of matches for Kent as wicket-keeper and took most dismissals (1253). First to take 100 dismissals in a season (1911 and 1913). Holds world record for most stumpings in a match (9). Joint holder of Kent record for most dismissals in a match (10). Later Secretary at Sundridge Golf Club.

25 Meyrick-Jones, Frederic Meyrick (1867-1950). Kent 1893-96 – 6 matches. Keeper: 1895 – 1 match (ct 1 st 2). Cambridge University 1887-88 (Blue 1888). Not known as wicket-keeper, another who kept in a season when Kent lacked a regular keeper. A clergyman and later headmaster. Reputation of service in the disadvantaged districts of London.

26 Baiss, Reginald Sydney Habershon (1873-1955). Kent 1895-1901 – 7 matches. Keeper: 1895 – 3 matches (ct 4). Lessness Park amateur who played for Oxford University at cricket (1895) and rugby. Kept in 1895 when Kent were without a recognised keeper for most of the season. Stockbroker,

27 Easby, Joseph William (1867-1915). Kent 1894-99 – 62 matches. Cap 1895. Keeper: 1895 – 2 matches (st 3). Another player, better known as a batsman, who kept in 1895 when Kent were without a recognised wicket-keeper. High scorer for St Lawrence. Later a publican in Dover.

28 Murrell, Harry Robert (1879-1952). Kent 1899-1905 – 27 matches. Keeper: 1900-04 – 6 matches (ct 17 st 3). Hounslow born with no opportunity at Kent with Huish and later Hubble, he joined Middlesex who he served as a player (1905-26) and scorer for 47 years. A Middlesex historian.

Kent County Cricket Players: A Bibliography

Part 5— Addenda

ADDITIONAL ENTRIES

E V Bligh (Kent 1849-1864)

Purey-Cast, Arthur – Edward Vesey Bligh: a memoir. Richard Jackson, 1908

W Caffyn (Kent 1858)

Caffyn William – Seventy-one not out: the reminiscences of William Caffyn Blackwood, 1899.

N Felix (Kent 1834-1852)

Felix on cricket by Nicholas Felix (1804-1876). The editor, 2021.

BENEFIT / TESTIMONIAL BROCHURES

List includes brochures of players who awarded benefits or testimonials when on the staff of other counties, as indicated.

ASIF Iqbal 1981

BENSON, Mark 1991

CLINTON, Grahame 1989 (Surrey)

COWDREY, Chris 1989

COWDREY, Graham 1997

DENLY, Joe 2019

DENNESS, Mike 1974 [

DOWNTON, Paul 1990 {Middlesex}

EALHAM, Alan 1982 [

EALHAM, Mark 2003

ELLISON, Richard 1993

EVANS, Godfrey 1953

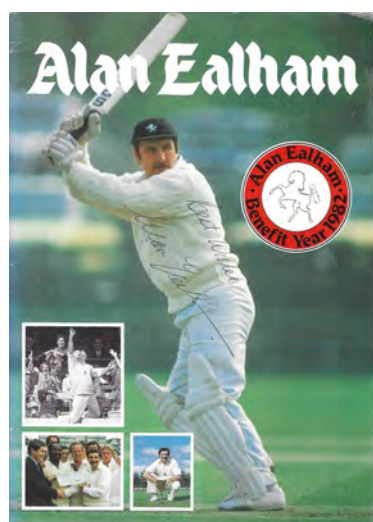
FAGG, Arthur 1951

FLEMING, Matthew 2001

FULTON, David 2006

GRAHAM, Norman 1977

HEADLEY, Dean 2002 {unofficial}



HEARNE, George 1890

IGGLEDEN, Alan 1998

JARVIS, Kevin 19870

JOHNSON, Graham 1983

JONES, Geraint 2012

KEY, Rob 2011

KNOTT, Alan 1976

LUCKHURST, Brian 1973

McCAGUE, Martin 2002

MARSH, Steve 1995

NICHOLLS, David 1980

NIXON, Paul 2007 {Leicestershire}

PARKS, Bobbie 1992 (Hampshire)

PATEL, Min 2004

PENN, Chris 1996

PHEBEY, Arthur 1960

SAGGERS, Martin 2009

SHEPHERD, John 1979

STEVENS, Darren 2016

TAVARÉ, Chris 1988

TAYLOR, Neil 1992

TREDWELL, James 2017

UNDERWOOD, Derek 1975 & 1986

WALKER, Matthew 2008

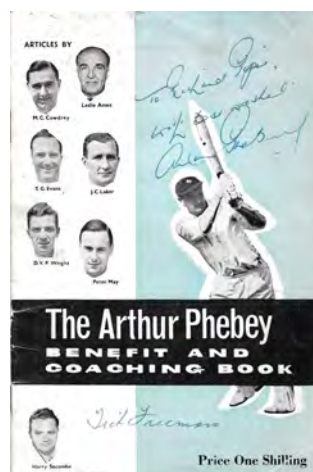
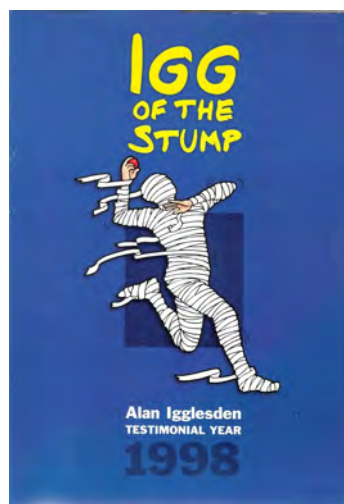
WARD, Trevor 1999

WELLS, Alan 1996 (Sussex)

WELLS, Vince 2001 (Leicestershire)

WOOLMER, Bob 1984

WRIGHT, Doug 1950 & 1957



Who's Who at KCHT

President : Hon Christopher Cowdrey

Trustees :

Simon Storey - Kent Cricket— CEO
Caroline Ellis - Kent Cricket—Curatorial Adviser
Howard Milton - Kent Cricket - Honorary Statistician
Jonathan Rice - Kent Cricket— Past President
Tony Kilbee - Kent Cricket Heritage Trust Treasurer

KCHT Committee

Chairman - Jonathan Rice - jnhrice@gmail.com

Secretary - vacant

Treasurer - Tony Kilbee - skilbee@gmail.com

Simon Storey - Simon.Storey@kentcricket.co.uk

David Robertson - david.robertson81@btinternet.com

Caroline Ellis - Caroline.ellis@kentcricket.co.uk

Howard Milton - howardmilton@btinternet.com

Derek Barnard - barnardderek6@gmail.com

Don Austen - don.austen2769@gmail.com

George Cocks - mikegeorgecocks@aol.com

Peter Francis - p.mfrancis@hotmail.co.uk

Kent Cricket Heritage Trust
Registered Charity Number 1154556
The Spitfire Ground, St Lawrence
Old Dover Road, Canterbury, Kent
CT1 3NZ

Inside Edge Contact

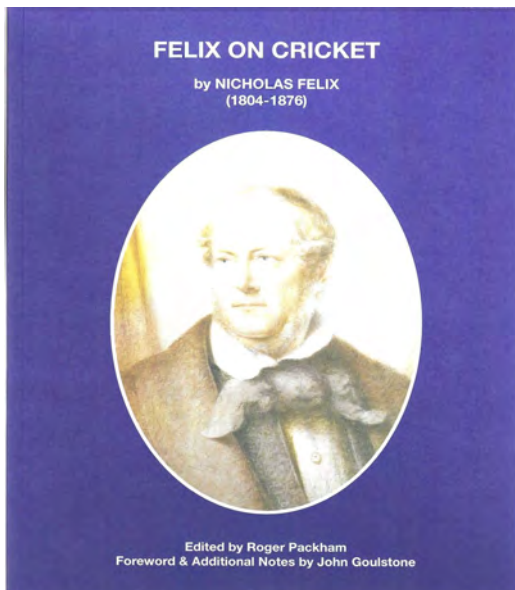
Feedback on this newsletter is always welcome as are suggestions for future contributions. The Kent Cricket Heritage Trust's committed interest is to all aspects of Kent cricket history, not just to the county club.

If you have something to say and/or contribute please contact Howard Milton at the e-mail address on this page or at 46 Elmfield Close, Gravesend, Kent DA11 0LP.

Read the KCHT blog at –

kentcricketheritagetrust.wordpress.com

New Publication



Nicholas Felix was a classical scholar, a great master of languages, a first-rate mathematician, a portrait and general painter, an accomplished musician, a playwright and, not the least, the finest cricketer of his age who was also a well-respected tutor of the game. The latter confirmed by his classic *Felix on the Bat* (1845)

Recently come to light has new material— Notices or anecdotes, or observations—by him. Written for the *Brighton Gazette* in January 1863 as part of a running commentary on the first volumes of *Frederick Lillywhite's Cricket Scores and Biographies*. They shed new and much interesting light on any number of his contemporaries, the likes of Alfred Mynn, Fuller Pilch, and Edward Wenman.

There are also obituaries, a Family tree and financial details of his testimonial fund.

Responsible for putting this all together is cricket historian Roger Packham, ably assisted with a foreword and additional notes by John Goulstone,

the great name of historical research of this early period.

Copies at £20 (including p & p) are available from Roger at 40 Raglan Precinct Town End, Caterham, Surrey.

CR3 5UG. R

roger.packham@hotmail.co.uk