

INSIDE EDGE

Christmas 2021

Volume 6

Number 3 (No 23)



Inside this issue:

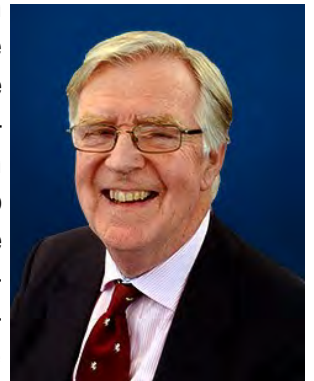
<i>Moment in Time</i>	2
<i>Blackheath C C</i>	2
<i>From the KCCC Collections</i>	3
<i>Ashes Archaeology</i>	4
<i>Lost Grounds in Maidstone</i>	4
<i>Wateringbury C C</i>	6
<i>Frittenden C C</i>	7
<i>Kent Players: a Bibliography</i>	8
<i>Kent County Cricket</i>	
<i>Grounds Book</i>	10

The Kent Cricket Heritage Trust A Message from the Chairman, Jo Rice

As we come to the end of another rather strange year, we have much to celebrate but also a lot of work to do. On the celebration side, we are particularly thrilled to have received two excellent archives, one from the first Canterbury-born cricketer to play Test cricket for England, the late Cecilia Robinson, about which Caroline Ellis has written in this edition of *Inside Edge*; and the other via our good relationship with Charlton Athletic's heritage team, of photographs from the late 1970s to the late 1990s by Tom Morris, who worked for both the Ad-dicks and us, taking a great variety of Kent cricket pictures. The Morris collection is of particular value in that it fills a gap in our archive: we have had up till now only a comparatively sparse collection of photographs of our teams and players from the final decades of the last century, but now we have more than enough pictures of Steve Marsh, Martin McCague, Neil Taylor and the rest to satisfy the keenest fan.

The Robinson collection represents a major collection of women's cricket history in the two decades after the Second World War, and we are promised more items still to come. I went to the funeral service for 'Robbie', as she was universally known in cricket circles, at the end of November in a beautiful 15th century church at Acrise, near Hawkinge, and was moved by the power and sincerity of the tributes to a lovely lady and highly talented cricketer, who died aged 97, full of years and friends.

Merry Christmas and a happy New Year to all.



Jonathan Rice



No Play Today at Tunbridge Wells

A photograph by Philip Paine taken along the road from the Nevill Ground, used by The Cricket Society as their unusual choice for their Christmas Card design in 2014.

A Moment in Time, Friday 9 September 1938

FOLKESTONE'S LEADING LIGHT TAXI SERVICE — UNITED SERVICES — Tel. 2271.

**Coachbuilding and
Motor Engineering
Works adjoining
Cricket Ground
— 'Phone 3103 —**

**Varlin
Walter Ltd**

**SERVICE GARAGE
(OPEN ALL NIGHT)
Bouverie Place and
Alexandra Gardens
— 'Phone 3103 —**

Wednesday, Thursday and Friday, September 7th, 8th and 9th. **SIR PELHAM WARNER'S XI v. ENGLAND PAST & PRESENT**

ENGLAND PAST AND PRESENT, 1st Innings.

1	WOOLLEY (Kent)	c. Edrich b. Pope A.	22	
2	FAGG (Kent)	c. Walker b. Pope A.	8	
3	PAYNTER (Lancs)	c. Pope A. b. Smith	20	
4	HENDREIN (Middlesex)	c. Pope G.	19	
5	W. R. HAMMOND (Glouc)	c. Lawler b. Pope A.	66	
6	AMES (Kent)	b. Pope G.	0	
7	PRICE (Middlesex)	c. Compton b. Pope G.	8	
8	A. P. F. CHAPMAN (Kent)	c. Edrich b. Pope A.	23	
9	VOCE (Notts)	c. Chalk b. Pope A.	24	
10	WRIGHT (Kent)	c. Chalk b. Pope A.	14	
11	WILKINSON (Lancs.)	not out	0	

No Balls 4 ; Wides ; Byes 10 ; Leg Byes 9
Fall of Wickets:—
1-24 : 2-65 : 3-89 : 4-101 : 5-111 : 6-117 : 7-214 : 8-228 : 9-247 : Total 250

ENGLAND PAST AND PRESENT, 2nd Innings.

1	WOOLLEY (Kent)	c. Pope A. b. Smith	31	
2	FAGG (Kent)	c. Walker b. Pope A.	8	
3	PAYNTER (Lancs)	c. Pope A. b. Smith	20	
4	HENDREIN (Middlesex)	c. Pope A.	19	
5	W. R. HAMMOND (Glouc)	c. Lawler b. Pope A.	66	
6	AMES (Kent)	b. Pope G.	0	
7	PRICE (Middlesex)	c. Compton b. Pope G.	8	
8	A. P. F. CHAPMAN (Kent)	c. Edrich b. Pope A.	23	
9	VOCE (Notts)	c. Chalk b. Pope A.	24	
10	WRIGHT (Kent)	c. Chalk b. Pope A.	14	
11	WILKINSON (Lancs.)	not out	0	

No Balls ; Wides ; Byes 5 ; Leg Byes 1
Fall of Wickets:—
1-23 : 2-65 : 3-89 : 4-101 : 5-111 : 6-117 : 7-214 : 8-228 : 9-247 : Total 250
*Captain. †Wicket-keeper. Umpires: Chester and Smith (E. J.)

The Test was won by Sir P. Warner's XI

England P. & P., 1st Innings.				2nd Innings.			
Score	Wicket	Run	Wicket	Score	Wicket	Run	Wicket
Pope A.	22	8	20	Woolley	31	8	20
Edrich	19	1	21	Walker	8	1	21
Smith	20	1	21	Pope A.	20	1	21
Chalk	14	1	21	Lawler	66	1	21

SIR PELHAM WARNER'S XI, 1st Innings.

1	D. F. WALKER (Notts)	c. Hammond b. Wright	23	
2	EDRICH (Middlesex)	c. b. Voce	8	
3	ROBERTSON (Middlesex)	c. Woolley b. Wilkinson	11	
4	COMPTON (Middlesex)	c. Price b. Wright	20	
5	DOLLEBY (Warwick)	b. Voce	17	
6	B. H. VALENTINE (Kent)	c. Price b. Wright	2	
7	F. G. H. CHALK (Kent)	b. Wilkinson	28	
8	POPE (G.) (Derby)	not out	15	
9	SMITH (P.) (Essex)	c. Woolley b. Wright	6	
10	POPE (A.) (Derby)	c. b. Wright	5	
11	W. H. V. LEVETT (Kent)	c. Voce b. Wright	7	

No Balls 1 ; Wides ; Byes 1 ; Leg Byes 1
Fall of Wickets:—
1-23 : 2-42 : 3-47 : 4-85 : 5-88 : 6-117 : 7-145 : 8-156 : 9-154 : Total 175

SIR PELHAM WARNER'S XI, 2nd Innings.

1	D. F. WALKER (Notts)	c. b. Voce	5	
2	EDRICH (Middlesex)	c. b. Voce	4	
3	ROBERTSON (Middlesex)	c. Woolley b. Wilkinson	11	
4	COMPTON (Middlesex)	c. Price b. Wright	20	
5	DOLLEBY (Warwick)	b. Voce	17	
6	B. H. VALENTINE (Kent)	c. Price b. Wright	2	
7	F. G. H. CHALK (Kent)	b. Wilkinson	28	
8	POPE (G.) (Derby)	not out	15	
9	SMITH (P.) (Essex)	c. Woolley b. Wright	6	
10	POPE (A.) (Derby)	c. b. Wright	5	
11	W. H. V. LEVETT (Kent)	c. Voce b. Wright	7	

No Balls ; Wides ; Byes ; Leg Byes ;
Fall of Wickets:—
1-23 : 2-42 : 3-47 : 4-85 : 5-88 : 6-117 : 7-145 : 8-156 : 9-154 : Total 175
*Captain. †Wicket-keeper. Umpires: Chester and Smith (E. J.)

Score: B. Bonfield

England P. & P., 1st Innings.				2nd Innings.			
Score	Wicket	Run	Wicket	Score	Wicket	Run	Wicket
Pope A.	22	8	20	Woolley	31	8	20
Edrich	19	1	21	Walker	8	1	21
Smith	20	1	21	Pope A.	20	1	21
Chalk	14	1	21	Lawler	66	1	21

HOTEL METROPOLE GALA DANCE—WEDNESDAY, SEPTEMBER 7th

FOLKESTONE'S LEADING LIGHT TAXI SERVICE — UNITED SERVICES — Tel. 2271.

The scorecard of a late season festival match played at Folkestone which was significant on two accounts.

Frank Woolley, now 51, was playing his last season and this was the last match of that season. As he traversed the land that year he was met with a succession of tremendous receptions. Here, at lunchtime on the second day, he was presented with a radio-gramophone. Sir Pelham Warner who, seemingly recently back from the Malay Straits for a final sight of Frank, spoke of how he hoped that one day someone would say "I think I saw to day someone who reminds me of Frank Woolley". If this could be said, it would be a happy day indeed for English cricket.

The other significant point about this match, it transpired, was this was the last ever match of the Folkestone Cricket Festival. When the cricket ground was shunted along Cheriton Road from what is now the Folkestone Invicta football ground, the first matches of note were played here in 1925. With the strong support of various local dignitaries plus the cricketing leadership of the Hon F S G Calthorpe, a late season festival of first-class matches was inaugurated on this new area. It was hoped that with Folkestone at its peak as a holiday resort that the support of the visitors would assure its success. The cricket festival did struggle. Even in the initial year the crowds were disappointing. Contemporary local newspaper reports speak of the lack of support from the Folkestone populace. This was perhaps surprising given the quality of the players appearing, and that invariably included the tail-end of the touring side's fixtures. Not only Woolley, but Jack Hobbs played his last match here. In 1933 it was threatened with extinction through lack of funds and was only saved by public subscription. It survived until this match in 1938; the 1939 Festival was cancelled with the outbreak of war and it was not revived after the hostilities.



Woolley, with Arthur Fagg, at the Oval 1938.

Blackheath Cricket Club History

Over many years there have been a number of histories of the rugby club once based at the Rectory Field in south-east London. Now at last there is one of Blackheath Cricket Club who have been there since the 1880s. Former Kent County Cricket Club President Chris Swadkin is responsible for filling this gap. It is not generally available, but if you are interested please contact Chris at csenergy@aol.com

From the Kent County Cricket Club Collections

The Cecilia Robinson Collection

- We were sad to hear of the recent death of the former Kent and England Women's Captain Cecilia Robinson at the age of 97. Last year we were able to share a photograph of Cecilia at the Vine ground in 1949, captaining Kent against the Australians.

KCCC Collections has now received the generous donation of Cecilia's cricket collection, brought to us by the cricket writer Carol Salmon. The collections consist of a series of scrapbooks and photograph albums, with an autograph book and other photographs. A good part of the material focuses on England Women's cricket in the 1950s, especially tours to Australia and New Zealand. Every aspect of touring is covered, from shipboard cricket to matches and visits – including England players at a wallaby farm!

The photograph shows Cecilia (left) coming out to bat for Kent with fellow-opener Kathleen Smith at the Tonbridge School Ground in 1960. Unfortunately, a 1960 game is not recorded, but scorecards exist for Kent playing Surrey in 1959 and Middlesex in 1962 at the ground. Kent lost both games.



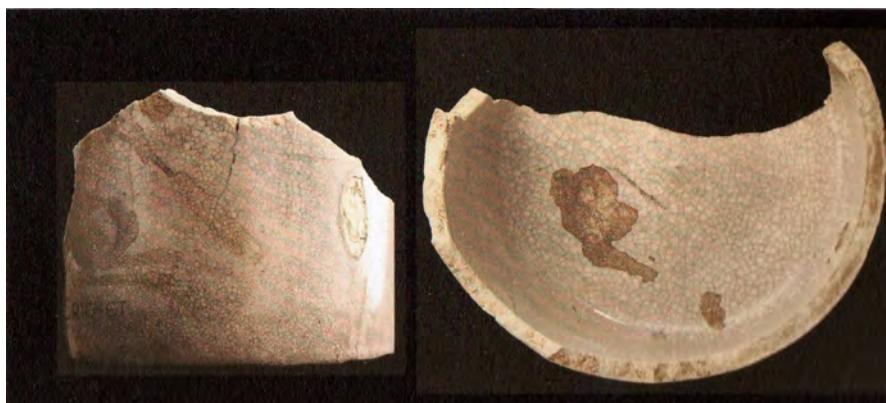
Together the material forms a remarkable record of the camaraderie and quality of women's cricket in an era when games are often 'lost'. The collections can form an excellent academic or archival cataloguing and research project, thereby making a real difference to knowledge about the story of the women's game.

Ashes Archaeology

A major archaeological study was undertaken on the estate of Cobham Hall, across the A2 from Gravesend. The Hall is a girls' public school now but its claim to history is that it once housed generations of the Earls of Darnley, including the 8th Earl, otherwise the Hon Ivo Bligh of Ashes fame. Once sited in the surrounding park was Park Cottage, a Georgian building comprehensively pulled down in the 1970s. One aspect of the programme, begun in 2016, was to excavate its foundations, still extant.

In a surviving area of the cellar was discovered on the very first day a piece of Victorian cricket memorabilia, once part of mug. The picture is not too clear but it does depict a kangaroo with a cricket bat. Did Ivo produce celebratory crockery to mark his famous win and were they distributed around estate staff? Who knows? But intriguing nevertheless.

Picture taken from Cobham Landscape Detectives; a community archaeology odyssey. Kent County Council 2019.



Lost Grounds in the Maidstone Area

Country Estates Part 1

Cricket as we know it today, owes much to wealthy landowners who were patrons of the game and often provided grounds within their Estates. One example was Sir Horatio Mann, who was actively involved for many years, and hosted an early Kent v Surrey match at his home at Bishopsbourne, near Canterbury in 1773. He was a member of that Kent side.

In Maidstone, Kent cricket gained from the generosity of the owners of **Mote House** and its extensive Park in establishing the Mote Cricket Club ground, where the present club play but no longer accommodates Kent who played 218 first class matches there from 1859 to 2005. The remainder of the estate was sold to the Maidstone Council who use to provide pitches for local clubs. The photograph is of Mote House which is now part of a retirement village.



The only other "lost" ground in the area to host Kent matches was **Preston Hall**, Aylesford which is known for its connection with the Royal British Legion. Kent played Surrey twice in each of 1846 and 1847 and the proximity of the River Medway allowed spectators to travel from the Maidstone Bridge to Allington Lock by small steamer to attend the matches. The Brassey family bought the Estate in 1867 and continued the cricketing tradition with Henry Brassey's XI playing matches against teams such as the Free Foresters, the Mote, I Zingari and the Hampshire Regiment. Both Preston Hall and Aylesford played on the same ground and further examples follow of support for local clubs from the "big house".

Allington Castle is close to Preston Hall and located near to Allington Lock. In 1086 the Domesday Book of Kent records Allington as a small Manor House worth 100 shillings a year. Its cricketing life was brief with an early reference in 1884 to the Club being in its infancy but rapidly rising in skill with the expectation that it will achieve a very respectable standing among the amateur cricketers of the County. In 1847 the attached report from the Maidstone Telegraph records a change in name and location, some ten years before the formation of the present Mote cricket Club, also initially known as Mote Park Cricket Club.

CRICKET.			
SUTTON VALENCE AND MOTE PARK.			
On Wednesday last an excellent match was played between the Sutton Valence club and the Mote Park club,—late Allington Castle club, its new name having been adopted in consequence of the Earl of Remney having kindly appropriated a part of his beautiful park for their meetings. The following is the score :			
Mote Park.		1st inn.	2nd inn.
R. Ruck, b by Woollett	12	b by Wells	1
Goodwin, b by Wells	0		
Robinson, b by Woollett	11	b by Wells	1
G. Harryman, st. Turner, b Woollett	3	not out	29
Pascoe, c by Wells, b by Wells	44	c by Porter, b by Wells	10
Blaxland, b by Woollett	6	not out	9
Hollands, b by Woollett	3		
Francis, b by Woollett	4	c Goodchild b Woollett	1
Oakley, b by Woollett	0		
Smythe, not out	1	c H. Payne, b Woollett	0
Headly, b by Woollett	1		
Byes 4, wide 4	8	Wide	3
	93		53
SUTTON VALENCE—1st. inn.			
W. Payne, b by Hollands	0	Clement, run out	4
Woollett, l.b.w., b Hollands	4	Porter, c Francis, b Pascoe	13
Turner, b by Hollands	1	Bridge, b by Hollands	0
J. Wells, b by Hollands	2	H. Payne, not out	2
Smythe, b by Pascoe	0	Byes 12, wide 1	13
Wells, b by Pascoe	0		
Goodchild, b by Hollands	8		4

Milgate Park cricket was played on land that is now part of the Tudor Park Golf Club and is located off the main Ashford Road (A20) approximately two miles from Maidstone. The oldest parts of the House were constructed in the sixteenth century with later additions and alterations.

Walter Fremlin was from the brewing family and owned the Estate from 1900 until his death in 1925. He regularly supported cricket with his own XI's, Milgate CC and the Pale Ale Brewery. Pelham Warner (Middlesex & England) who lived in the area and was knighted for his services to cricket, played on several occasions and captained his XI, including England players Colin Blythe, Patsy Hendren and Frederick Fane. against Mr WT Fremlin's XI. The photograph shows a match in progress.



Milgate Park

Boxley House is a 17th century Manor House set in 17 acres of parkland and currently the academic site of the European School of Osteopathy. In the early 1900's the estate was owned by the Style family associated with one of the great brewing firms at Maidstone and the private ground was shared between Boxley CC and the brewery team Style & Winch. Cricket continued until the mid 1960's when a combination of ground conditions not having recovered from being ploughed up during the war and the pavilion being burnt down, signalled the end of play.

Thurnham Court is Grade II Listed, dating in part from the early 17th Century and is situated near to the Pilgrims' Way and adjacent to St. Mary's Church where the legendary Alfred Mynn is buried. The earliest references to Thurnham cricket are in 1773 but the location of these early matches has not been confirmed. However a cricket pitch was located within the grounds of Thurnham Court for many years but play ceased there after 1968 when the new pavilion, having been built the previous year, was wrecked by freak winds and the practicalities of replacing the building proved too daunting.

The Gore Court Estate is located at Church Road , Otham and is the site of a Medieval building and ancient parkland, with the house (shown) and gardens undergoing many changes and uses over the years. The Cricket Club was located within the grounds and referred to as either Otham or Gore Court (Otham) and the field where matches were played is now residential. There was no more cricket after the start of the Second World War. There are recollections of soldiers camping in the woods and Bren-Gun carriers on the cricket ground.



Boughton Mount is described as a centuries old historic house and in 1901 the Estate was bought by George Foster Clark who had founded a Maidstone factory which manufactured custard powder, jellies and blancmange powder, and later other culinary delicacies. Eiffel Tower lemonade was produced and the team of Foster Clark Ltd played under the name of Eiffel Tower from before World War I until after World War II. There were two grounds on the estate, the other being used by the Maidstone Liberal Club.

Hunton Court dates to the early 17th century with a 105 acre park. Currently there are two lakes, a Victorian garden and 200 year old trees. Prior to 1894 it was known as Court Lodge. Henry Campbell Bannerman (1836-1908) was Leader of the Liberal Party and prime Minister between 1905 and 1908 and inherited the estate from his Uncle Henry Bannerman.

Between 1887 and 1893, John Bazley White and his wife Lady Grace Bazley White lived at Hunton Court and he was a cement manufacturer and Conservative MP for Gravesend. They were obviously involved in village life which is illustrated by a report of a match in 1890. Hunton Cricket Club still play but not at Hunton Court.



Boughton Monchelsea Cricket Club played on land which was part of the **Boughton Place Estate** and one of its owners was David Clark who played 75 matches for Kent (1946-1951), Captain from 1949-1951, Chairman (1970-1975) and President in 1990. He was also Treasurer and President of MCC.

Boughton Place is a Country House and a Grade 1 listed building. A fortified Manor House was built on the site in the 1300's and over the years has undergone many changes. There is a further Kent cricketing connection with Sir Horatio Mann MP, an early patron of Kent cricket, inheriting the House from his father.

The Club ceased playing from 2001 and the photograph shows the ground, located at Church Road, Crafty Green as it is today, with the base of the pavilion visible.



To be continued

Ian Lambert

Wateringbury Cricket Club History

Ian Lambert has produced a digital history of Wateringbury Cricket Club, which will feature in part two of the above series.

If you are interested please contact Ian at lambertsontour@hotmail.com.

An Appeal for Cricket Club Histories

If you know of a recent Kent cricket club history that has not been mentioned in this newsletter, please let us know and we will give it its due publicity here and possibly in the Kent County Cricket Club Annual. The address is howardmilton@btinternet.com.

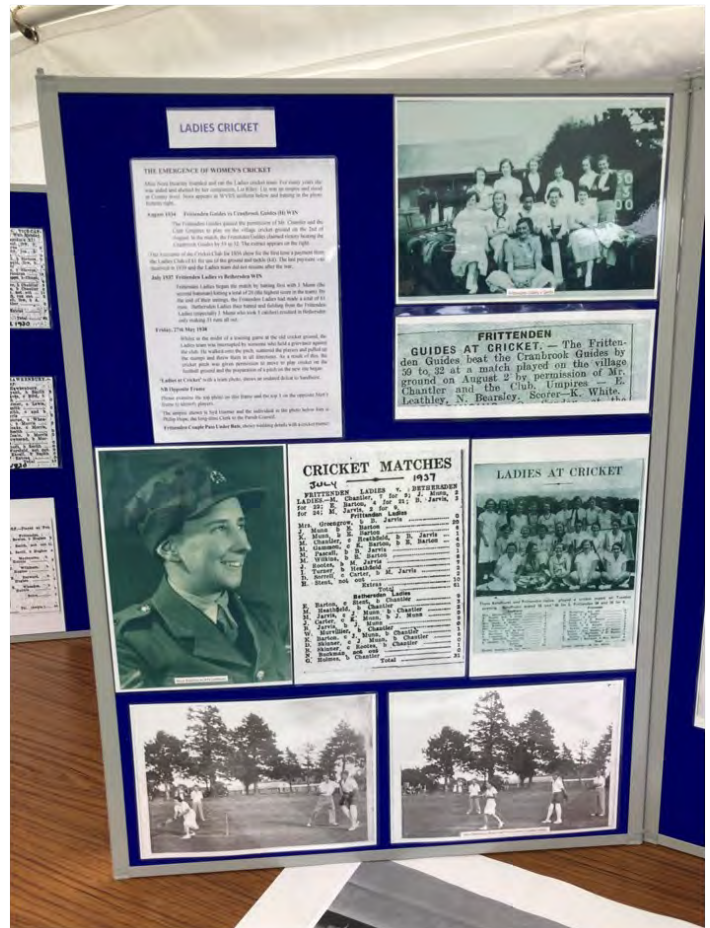
Frittenden Cricket Club Exhibition

To coincide with the final fixture of the season, an intra-club match, Frittenden Cricket Club hosted an exhibition by the Frittenden Historical Society on the history of cricket in that delightful village. The contents of Phil Betts' article in the Summer/Autumn 2021 issue of *Inside Edge* formed the basis of the exhibition though additional information, which had recently come to light, was helpful in the final presentation

The very active Historical Society set out the exhibition, in a tent adjacent to the Club's fine pavilion, using several panels of information, many photographs, artefacts and other relevant items. The exhibition attracted a steady stream of visitors from Frittenden and a large number also from nearby towns and villages

No doubt, cricket will get some sympathetic mentions in a book entitled "An obscure and inconsiderable parish: A History of Frittenden", authored and self-published by Phil Betts, which will be officially launched in December

David Kelly



Frittenden Cricket Club Ground

Kent County Cricket Players: A Bibliography

Part 4— S to Y

Books by and on Kent county first-team players. Books 'by' may include titles with little or no Kent cricket. Nineteenth century 'given' players and overseas players are included.

D M Sayer (*Kent 1955-1976*)

Lambert, Ian – Slayer: the story of a fast bowler: David Sayer. The Author, 2018.

Shahid Afridi (*Kent 2004*)

Shahid Afridi and Wajahat S Khan – Game changer. Harper Sport (India), 2019.

J N Shepherd (*Kent 1966-1981*)

Briggs, Paddy — John Shepherd: the loyal cavalier. (Lives in cricket.) Association of Cricket Statisticians and Historians, 2009.

E T Smith (*Kent 1996-2004*)

Smith, Ed — Luck: what it means and why it matters. Bloomsbury, 2012.

— On and off the field. Viking, 2004.

— Playing hard ball. Little, Brown, 2002.

— What sport tells us about life. Viking, 2008 (Penguin paperback, 2009).

A Symonds (*Kent 1999-2004*)

Symonds, Andrew and Gray, Stephen – Roy: going for broke. Hardie Grant Books (Australia), 2006.

Roy on the rise: a year of living dangerously. Hardie Grant Books (Australia), 2008,

C H Townshend (*Kent 1827*)

Cave, Peter, editor – The life and times of Chauncy Hare Townshend: a Victorian collector. The Friends of Wisbech and Fenland Museum, 1998.

D L Underwood (*Kent 1963-1987*)

Crofton, Philip and Bartlett, Kit — Derek Underwood. (Famous cricketers series.) Association of Cricket Statisticians and Historians, 2004.

Underwood, Derek – Beating the bat: an autobiography. Stanley Paul, 1975.

- Deadly down under. Arthur Barker, 1980.

S R Waugh (*Kent 2002*)

Egan, Jack – One who will: the search for Steve Waugh. Allen & Unwin (Australia), 2004.

Gately, Mark – Waugh declared: the story of Australia's famous cricketing twins. Ironbark Press (Australia), 1993.

Meher-Homji, Kersi – The Waugh twins. Simon & Schuster, 1999.

Perry, Roland – Waugh's way: the Steve Waugh story; learner, legend, leader. Random House Australia, 2000.

— revised and updated. 2002.

Waugh, Steve – Out of my comfort zone: the autobiography. Penguin Books/Viking (Australia), 2005.

G J V Weigall (*Kent 1891-1903*)

Weigall, G J V – Cricket: the art of "playing the game". Cricket Press, 1922.

A P Wells (Kent 1997-2000)

Wells, Alan – The captain's year: a first-hand account of a season in the life of a professional cricketer and captain. Two Heads, 1994.

T W Wills (Kent 1855-1856)

De Moore, Greg — Tom Wills: his spectacular rise and tragic fall. Allen & Unwin (Australia), 2008.

Flanagan, Martin – The call [biographical novel]. Allen & Unwin (Australia), 1998.

— *adapted as a play by Bruce Myles*. Currency Press (Australia), 2004.

Perrin, Les – Cullin-la-Ringo: the triumph and tragedy of Tommy Wills. The author, 1998.

E Willsher (Kent 1850-1875)

Phillips, Giles — Edgar Willsher: the lion of Kent. (Lives in cricket.) Association of Cricket Statisticians and Historians, 2012.

F E Woolley (Kent 1906-1938)

Conder, Stanley and Preston, Norman – Frank E Woolley 1887-1978: Kent and England cricketer. (Reprint from Wisden 1979) Nubern, 1979.

Flicker Productions Ltd.— Cricket: Frank Woolley: pull to leg and forcing shot, off the back foot, to the off. The company, 1936.

– Cricket: Frank Woolley: square cut and walking shot. The company, 1936.

Haigh, F H – The cricketing career of Frank Woolley. J A Jennings, 1927.

- 2nd edition. 1928.

Milton, Howard – F E Woolley. (Famous cricketers series.) Association of Cricket Statisticians, 1989.

— 2nd edition. Association of Cricket Statisticians and Historians, 1998.

— Kent's greatest cricketer: a tribute to Frank Woolley on his ninetieth birthday broadcast on BBC Radio Medway. Typescript, 1977.

Peebles, Ian – Woolley: the pride of Kent. *The Cricketer*/Hutchinson, 1969.

Rosenwater, Irving – When F E Woolley scored a century for Lancashire. Privately published, 2003.

Warner, Oliver – Frank Woolley. (Cricketing lives.) Phoenix House, 1952.

Woolley, Frank – The king of games. S Paul, 1936.

— **and Woolley, Martha Wilson** – Early memoirs of Frank Woolley. *The Cricketer*, 1976.

R A Woolmer (Kent 1968-1984)

Woolmer, Bob – Pirate and rebel? An autobiography. Arthur Barker, 1984.

— Skilful cricket. A & C Black, 1993.

— **and Noakes, Tim with Moffett, Helen** — Bob Woolmer's art and science of cricket. New Holland, 2008.

— Woolmer on batting. New Holland, 2010.

— Woolmer on bowling. New Holland, 2010.

— **and Tennant, Ivo** – Woolmer on cricket. Virgin, 2000.

D V P Wright (Kent 1932-1957)

Phipps, Ian – D V P Wright. (Famous cricketers series.) Association of Cricket Statisticians and Historians, 1998.

Wright, Doug – Cricket skills and techniques: a comprehensive guide to coaching and playing. Arthur Barker, 1971.

W Yardley (Kent 1868-1878)

Simons, Grenville – William Yardley: master of bat and burlesque. Wisteria Books, 1997.

Who's Who at KCHT

President : Hon Christopher Cowdrey

Trustees :

Simon Storey - Kent Cricket— CEO

Caroline Ellis - Kent Cricket—Curator

Howard Milton - Kent Cricket - Honorary Statistician

Jonathan Rice - Kent Cricket— Past President

Tony Kilbee - Kent Cricket Heritage Trust Treasurer

KCHT Committee

Chairman - Jonathan Rice - jnhrice@googlemail.com

Secretary - David Robertson -

david.robertson81@btinternet.com

Treasurer - Tony Kilbee - skilbee@gmail.com

Simon Storey - Simon.Storey@kentcricket.co.uk

Caroline Ellis - Caroline.ellis@kentcricket.co.uk

Howard Milton - howardmilton@btinternet.com

Derek Barnard - barnardderek6@gmail.com

Don Austen - don.austen2769@gmail.com

George Cocks - mikegeorgecocks@aol.com

Peter Francis - p.mfrancis@hotmail.co.uk

Kent Cricket Heritage Trust
Registered Charity Number 1154556
The Spitfire Ground, St Lawrence
Old Dover Road, Canterbury, Kent
CT1 3NZ

Inside Edge Contact

Feedback on this newsletter is always welcome as are suggestions for future contributions. The Kent Cricket Heritage Trust's committed interest is to all aspects of Kent cricket history, not just to the county club.

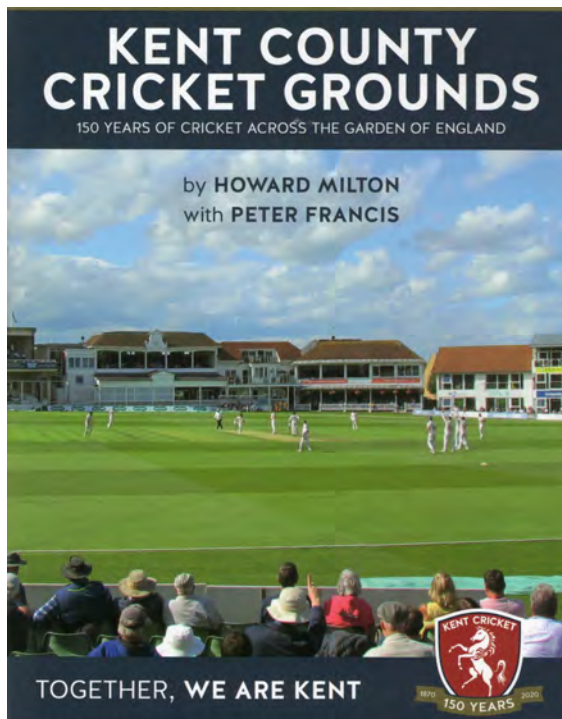
If you have something to say and/or contribute please contact Howard Milton at the e-mail address on this page or at 46 Elmfield Close, Gravesend, Kent DA11 0LP.

Read the KCHT blog at –

kentcricketheritagetrust.wordpress.com

Kent County Cricket Grounds Book

Howard Milton and Peter Griffiths would like to thank all those who supported the publication of *Kent County Cricket Grounds; 150 years of cricket across the Garden of England* by purchasing copies. The reviews have been incredible.



As you may be aware the funds for its production were largely provided by Howard and Peter supported by bodies close to Kent county cricket, notably the Kent County Cricket Supporters Club and the Kent Cricket Heritage Trust.

Despite the frustrations of the lockdowns and access difficulties to the Kent Club Shop, six hundred copies have been sold which actually takes the book into profit. As Howard and Peter have always made it clear that they will not take a penny of the hoped-for profit, this money will be divided amongst the bodies who supported it.

Copies are still available (£20 to KCHT members) online from the Kent Shop (it is not online at the moment of writing this) www.kentcricketclubshop.co.uk or by cheque payable to Peter Francis at 34 Park Avenue, Maidstone, Kent ME14 5HL.